

Newfolden Schools 1950 to 1995

As a thriving community, Newfolden continues to support education opportunities. Over time, as transportation improved, enrollment increased and educational needs evolved, change brought an end to the one-room country schools. On July 1, 1968 the Holt and Viking schools consolidated with Newfolden, forming a new district that was renamed Marshall County Central Schools. Today (2013) the enrollment of Marshall County Central Schools averages about 400 students.



Time-line 1950-1995

- 1951 - District 142, 69, 127, 107 and part of District 100 (Strandquist) schools sold their country schools and land.
- August 10, 1951 part of the bus garage was remodeled into seventh and eighth grade classrooms, and an 18x22' annex was to be constructed for use as a corridor and storage space.



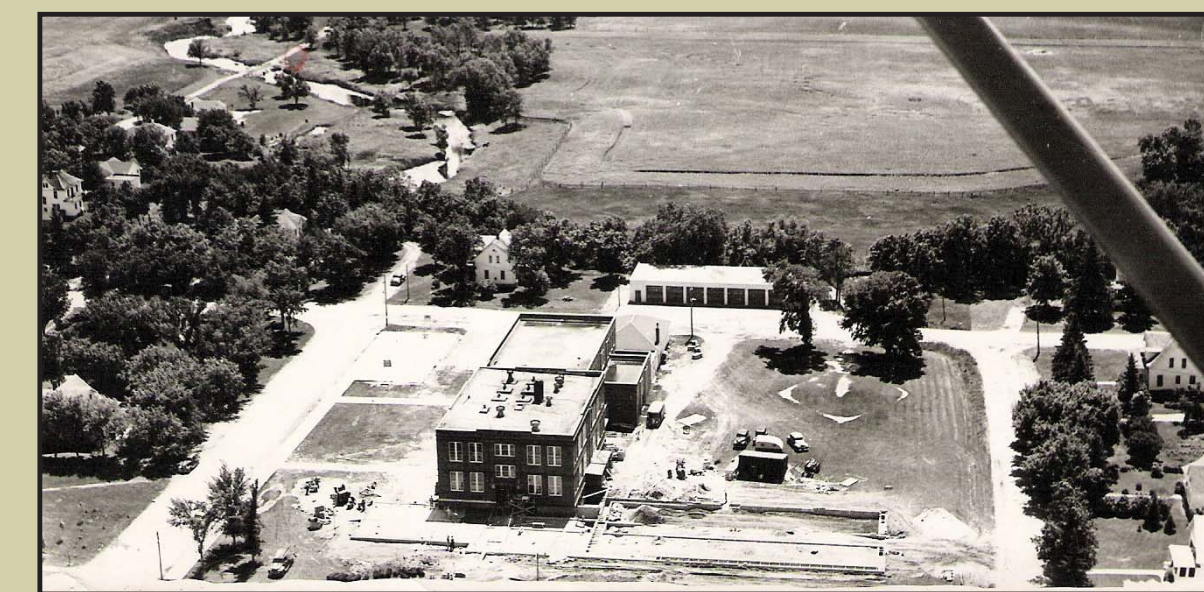
Newfolden High School Band. 1954.

- August 29 1951- Proposal of a new eight-stall bus garage
- 1952 - Proposal for a new school building and remodeling of the old building. Part of the proposal included remodeling the present building for high school use.
- 1953 - Construction of the new school began on June 6.
- Fall 1953 - The lunchroom was not completed so lunches were served by the school cooks at Bethlehem Lutheran Church during the fall and winter. On Monday, February 8, 1954 the first meal in the new lunchroom was served.
- 1968 - Proposal of a new high school, and 29 acres was purchased adjacent to the playground for the new school. A special election in Newfolden, Holt and Viking passed with 494 voting yes, 259 voting *no*.
- 1968 - Purchased the Elsworth and Audrey Maki house, which was to be used as a house for the principal.



Elementary School in the mid 1950s.

- April 23, 1969 - New school construction bids were rejected, but were accepted on May 14, 1969 after the tunnel connecting the elementary school to the high school was eliminated from consideration.



Aerial view of the elementary school construction. Circa 1969.

- June 11, 1970 - Construction of a rental house for the superintendent.
- Sunday, December 13, 1970 - Six hundred people attended the new high school dedication.
- July 27, 1978 - The school-owned Maki house was sold to Tom and Pat Mjelde.
- June 12, 1980 - Bus repair shop and garage was constructed on a portion of land purchased from the Andrew Bakke Estate in 1954 for \$250.
- November 7, 1991 - Fire severely damaged Marshall County Central High School
- 1992 - Construction began on a new high school. It was dedicated on October 18, 1992.

- April 26, 1994 - A special election was called to build a new elementary school. The 1916 school was demolished and was replaced with a 4,777 square foot structure that includes an elementary library, music room, staff room, rest rooms and a new heating system.
- 1995 - Expansion of the 1980 bus garage.

FIRE!

Thursday, November 7, 1991
3:38 a.m. the Marshall County Sheriff's office received a call that Marshall County Central High School was on fire. The cause of the fire was determined to be a faulty coffee pot in the teacher's lounge. Construction began in 1992 with a new 5.2 million dollar, 61,064 square foot building that was 100 square feet larger than the building it replaced.

